

1 EXAMPLE POST LAYOUT
PLAN VIEW

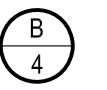
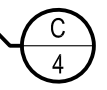
TWO POSTS AT EACH CHANGE
OF DIRECTION OR ELEVATION, TYP

FINISHED
FLOOR

STAIR
DOWN

3' MAX POST
SPACING

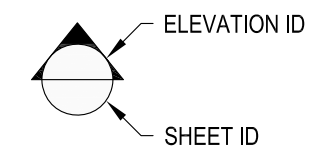
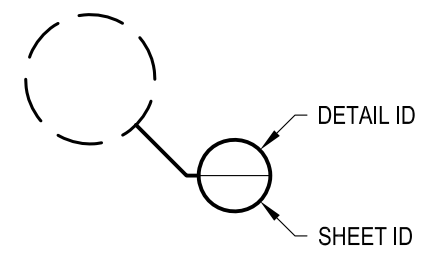
POST
CL



NOTES:

1. TOP RAIL NOT SHOWN FOR CLARITY.
2. ALL PARTS AND COMPONENTS MADE WITH 316 STAINLESS STEEL UNLESS NOTED OTHERWISE.

LEGEND



□ CORE MOUNT POST

□ □ CORE MOUNT DOUBLE POST

CL CENTERLINE

F.F. FINISHED FLOOR

TYP TYPICAL CONDITION APPLIES
ELSEWHERE AT SIMILAR CONDITIONS

| | | | |
|----------|------|-------|--------|
| DATE | 2024 | SHEET | 1 OF 4 |
| SCALE | NONE | | |
| DESIGNER | AGS | | |

OLYMPUS SPECIFICATION DRAWING
** COMMERCIAL **

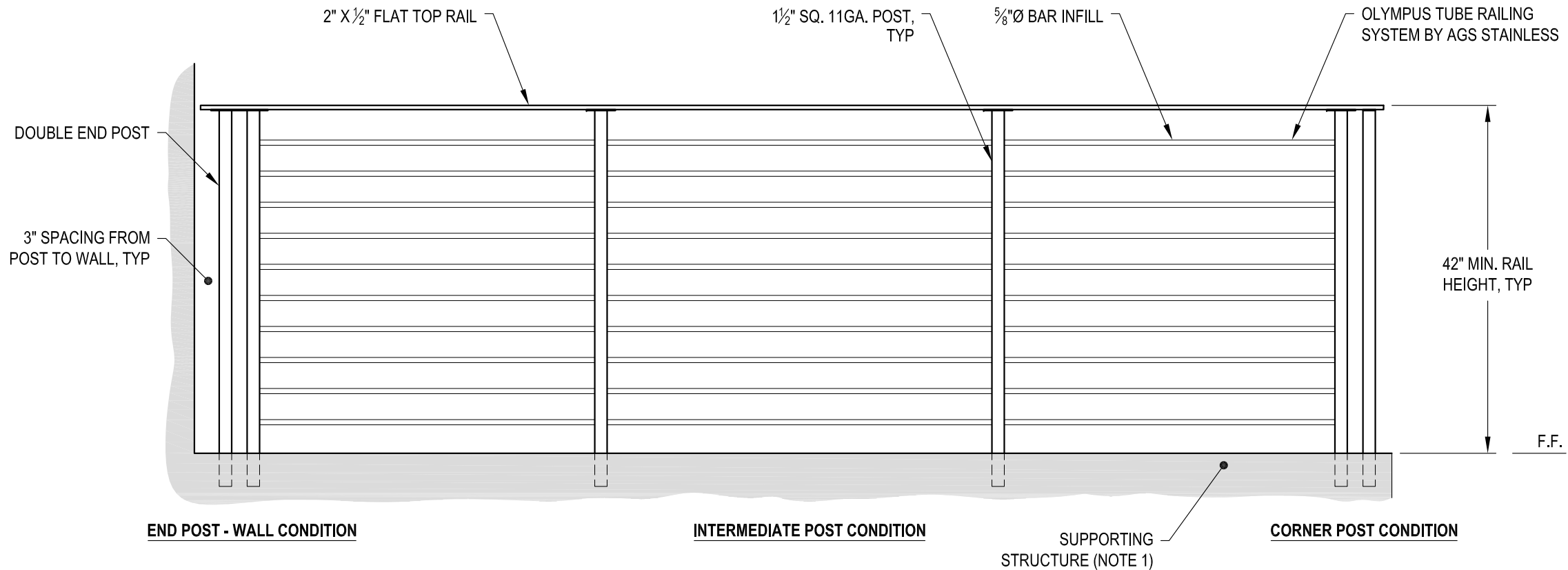
42" CORE MOUNT - FLAT TOP

7873 NE DAY ROAD
BAMBRIDGE ISLAND, WA 98110
PHONE - (888) 842-9492
FAX - (206) 842-8179
WWW.AGSSTAINLESS.COM



NOTES:

- DECK STRUCTURE CAN VARY GREATLY. IT IS THE RESPONSIBILITY OF THE CUSTOMER TO VERIFY THAT THE SUPPORTING STRUCTURE IS ADEQUATE TO MEET THE LOAD REQUIREMENTS OF THE GOVERNING BUILDING CODE(S). *AGS Stainless Inc.* RECOMMENDS CONSULTING A DESIGN OR CONSTRUCTION PROFESSIONAL TO ADDRESS THESE ISSUES.



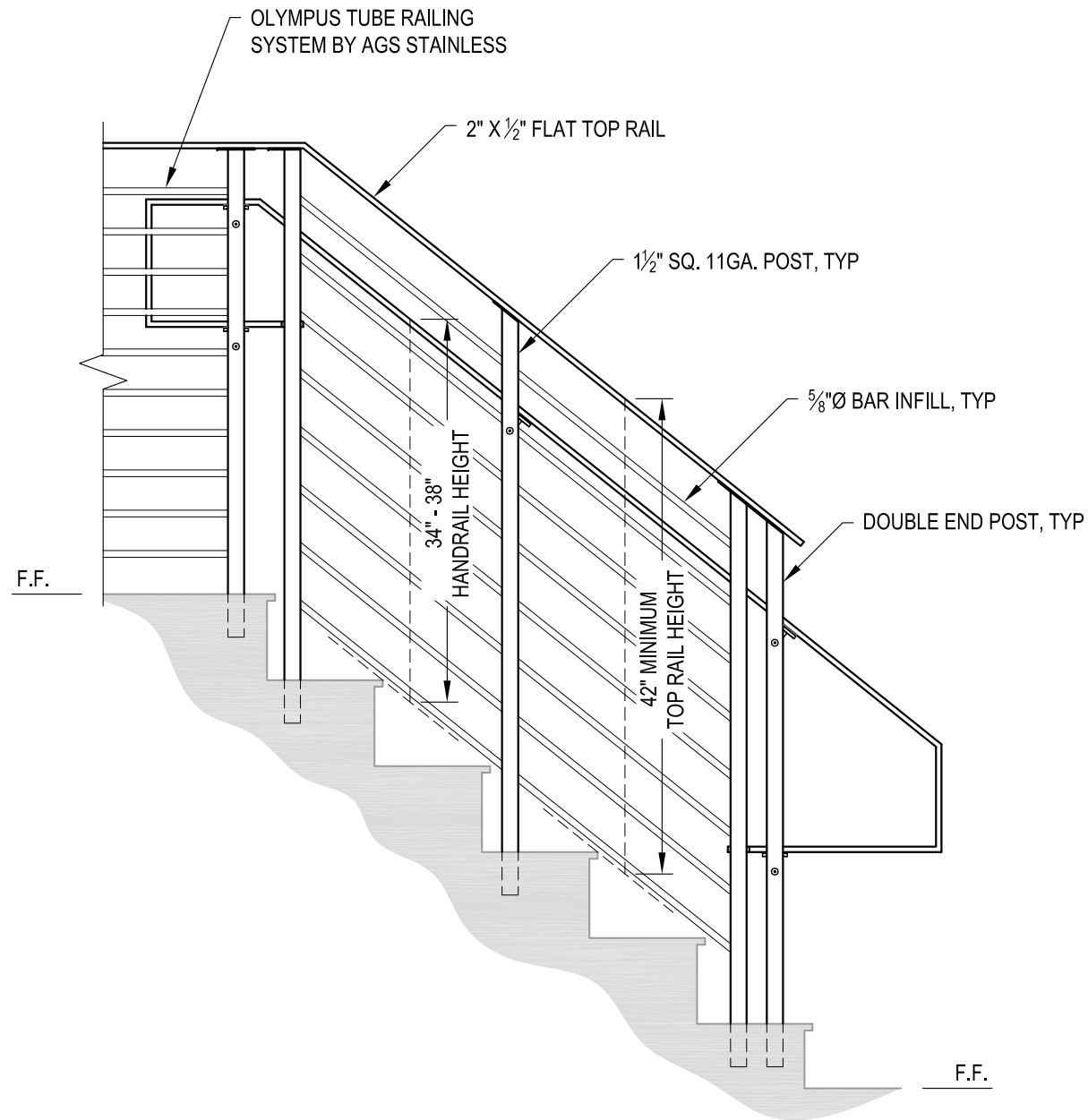
A TYPICAL RAILING CONDITION ELEVATION

| | | | |
|----------------|------|----------|--------|
| DATE | 2024 | SHEET | 2 OF 4 |
| OLYMPUS CM42FC | | | |
| SCALE | NONE | DESIGNER | AGS |

OLYMPUS SPECIFICATION DRAWING
 ** COMMERCIAL **
 42" CORE MOUNT - FLAT TOP

7873 NE DAY ROAD
 BAINBRIDGE ISLAND, WA 98110
 PHONE - (888) 842-9492
 FAX - (206) 842-8779
 WWW.AGSSTAINLESS.COM





A STAIR
ELEVATION

AGS Stainless Clearview® Railing Systems are designed to meet the requirements of the latest edition of the IRC/IBC.

NOTES:

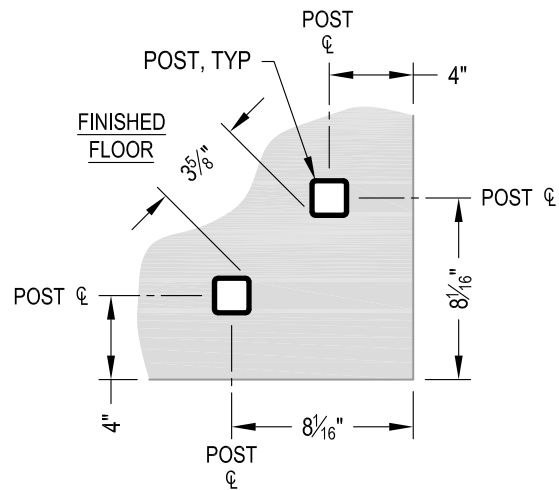
1. STAIR CONSTRUCTION VARIES GREATLY. AS-BUILT CONDITIONS MAY ALTER RAILING DESIGN, INCLUDING POST LOCATION & MOUNTING, INFILL SPACING & TOP RAIL LAYOUT.

| | |
|----------|----------------|
| OWNER | OLYMPUS CM42FC |
| SCALE | NONE |
| DESIGNER | AGS |
| DATE | 2024 |
| SHEET | 3 OF 4 |

OLYMPUS SPECIFICATION DRAWING
 ** COMMERCIAL **
 42" CORE MOUNT - FLAT TOP

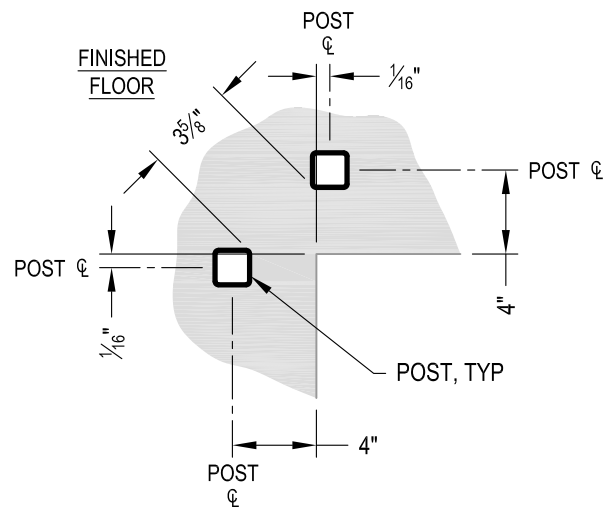
7873 MEADY ROAD
 BAINBRIDGE ISLAND, WA 98110
 PHONE - (888) 842-9492
 FAX - (206) 842-8179
 WWW.AGSSTAINLESS.COM





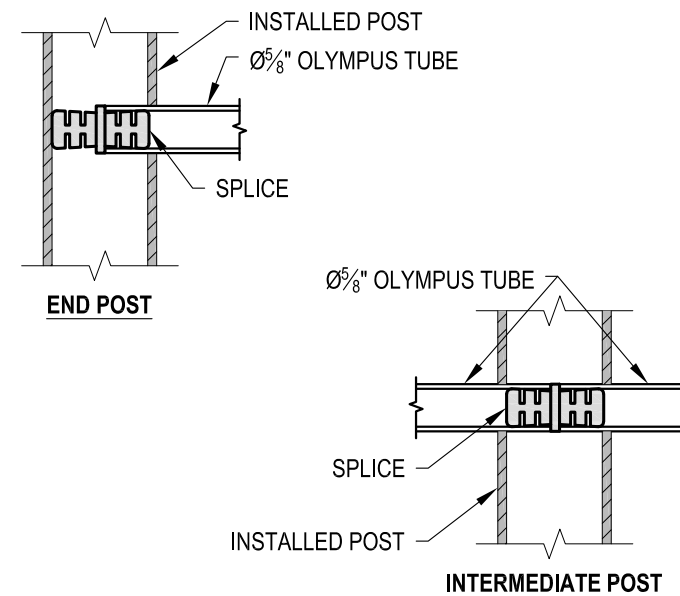
NOTE: 90° SHOWN, OTHER ANGLES SIMILAR

A TYPICAL 90° CORE MOUNT OUTSIDE CORNER DETAIL

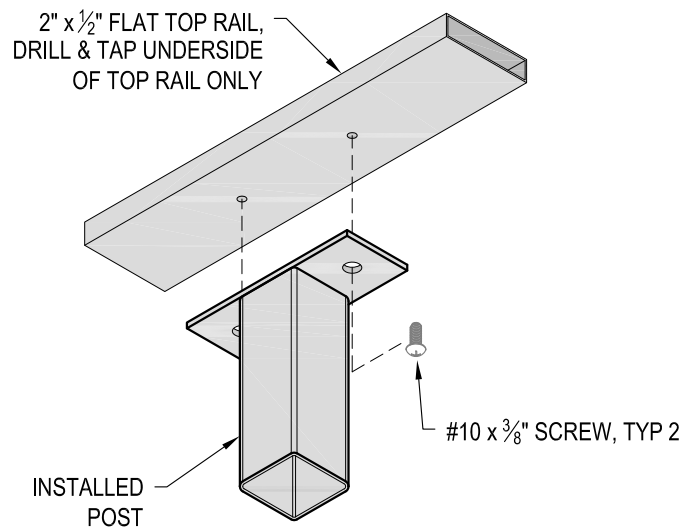


NOTE: 90° SHOWN, OTHER ANGLES SIMILAR

B TYPICAL 90° CORE MOUNT INSIDE CORNER DETAIL



C FITTING INSTALLATION - OLYMPUS SPLICE DETAIL



D TOP RAIL INSTALLATION - FLAT DETAIL

| | |
|----------|--------|
| DATE | 2024 |
| SCALE | NONE |
| DESIGNER | AGS |
| SHEET | 4 OF 4 |

OLYMPUS SPECIFICATION DRAWING
 ** COMMERCIAL **
 42" CORE MOUNT - FLAT TOP

7873 ME DAY ROAD
 BAINBRIDGE ISLAND, WA 98110
 PHONE - (888) 842-9492
 FAX - (206) 842-8779
 WWW.AGSSTAINLESS.COM

