

**1** EXAMPLE POST LAYOUT  
PLAN VIEW

TWO POSTS AT EACH CHANGE  
OF DIRECTION OR ELEVATION, TYP

FINISHED  
FLOOR

STAIR  
DOWN

3' MAX POST  
SPACING

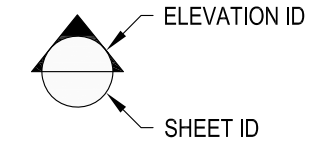
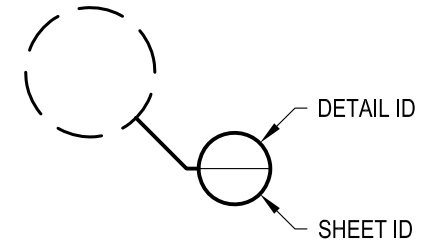
POST  
CL



**NOTES:**

1. TOP RAIL NOT SHOWN FOR CLARITY.
2. ALL PARTS AND COMPONENTS MADE WITH 316 STAINLESS STEEL UNLESS NOTED OTHERWISE.

**LEGEND**



□ CORE MOUNT POST

□ □ CORE MOUNT DOUBLE POST

CL CENTERLINE

F.F. FINISHED FLOOR

TYP TYPICAL CONDITION APPLIES  
ELSEWHERE AT SIMILAR CONDITIONS

DWG#	OLYMPUS CM42WC	DATE	2024
	SCALE		NONE
DESIGNER	AGS	SHEET	1 OF 4

OLYMPUS SPECIFICATION DRAWING  
\*\* COMMERCIAL \*\*

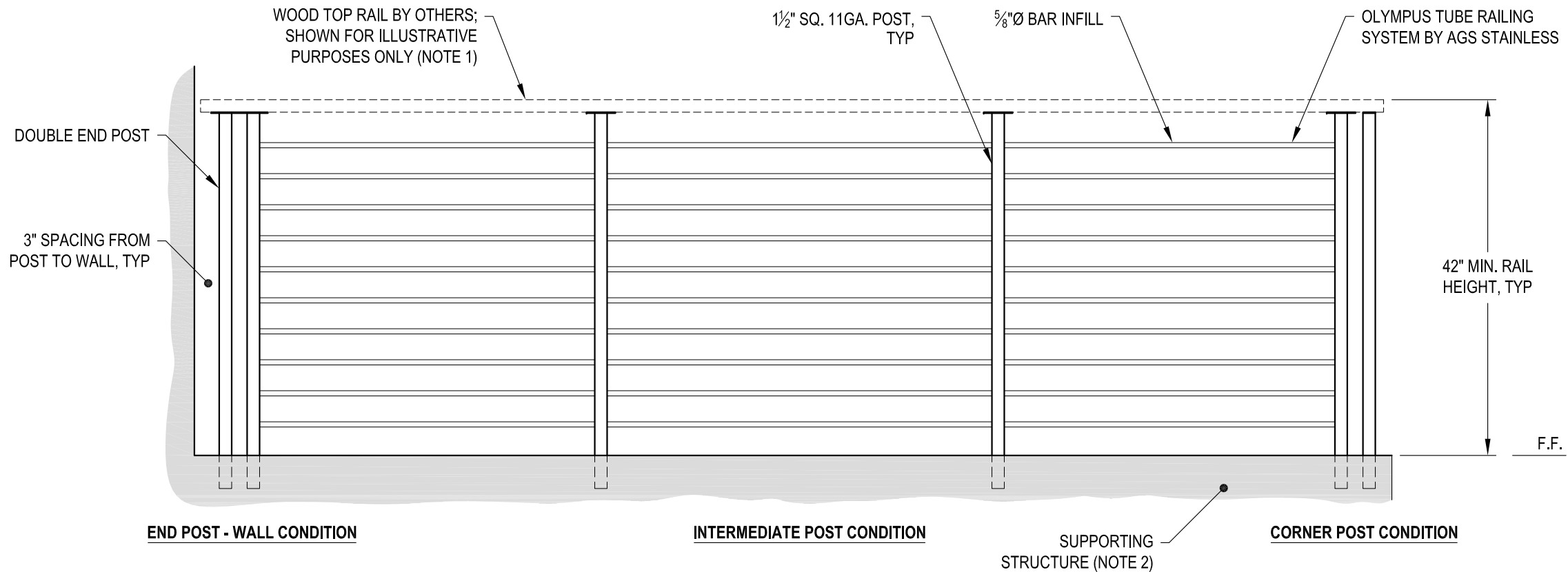
42" CORE MOUNT - WOOD TOP

7873 NE DAY ROAD  
BAMBRIDGE ISLAND, WA 98110  
PHONE - (888) 842-9492  
FAX - (206) 842-8179  
WWW.AGSSTAINLESS.COM



**NOTES:**

1. TOP RAIL SHOULD BE SELECTED SO THAT ALL GOVERNING CODE REQUIREMENTS ARE SATISFIED. THESE INCLUDE SHAPE, STRENGTH AND RAILING HEIGHT.
2. DECK STRUCTURE CAN VARY GREATLY. IT IS THE RESPONSIBILITY OF THE CUSTOMER TO VERIFY THAT THE SUPPORTING STRUCTURE IS ADEQUATE TO MEET THE LOAD REQUIREMENTS OF THE GOVERNING BUILDING CODE(S). AGS Stainless Inc. RECOMMENDS CONSULTING A DESIGN OR CONSTRUCTION PROFESSIONAL TO ADDRESS THESE ISSUES.



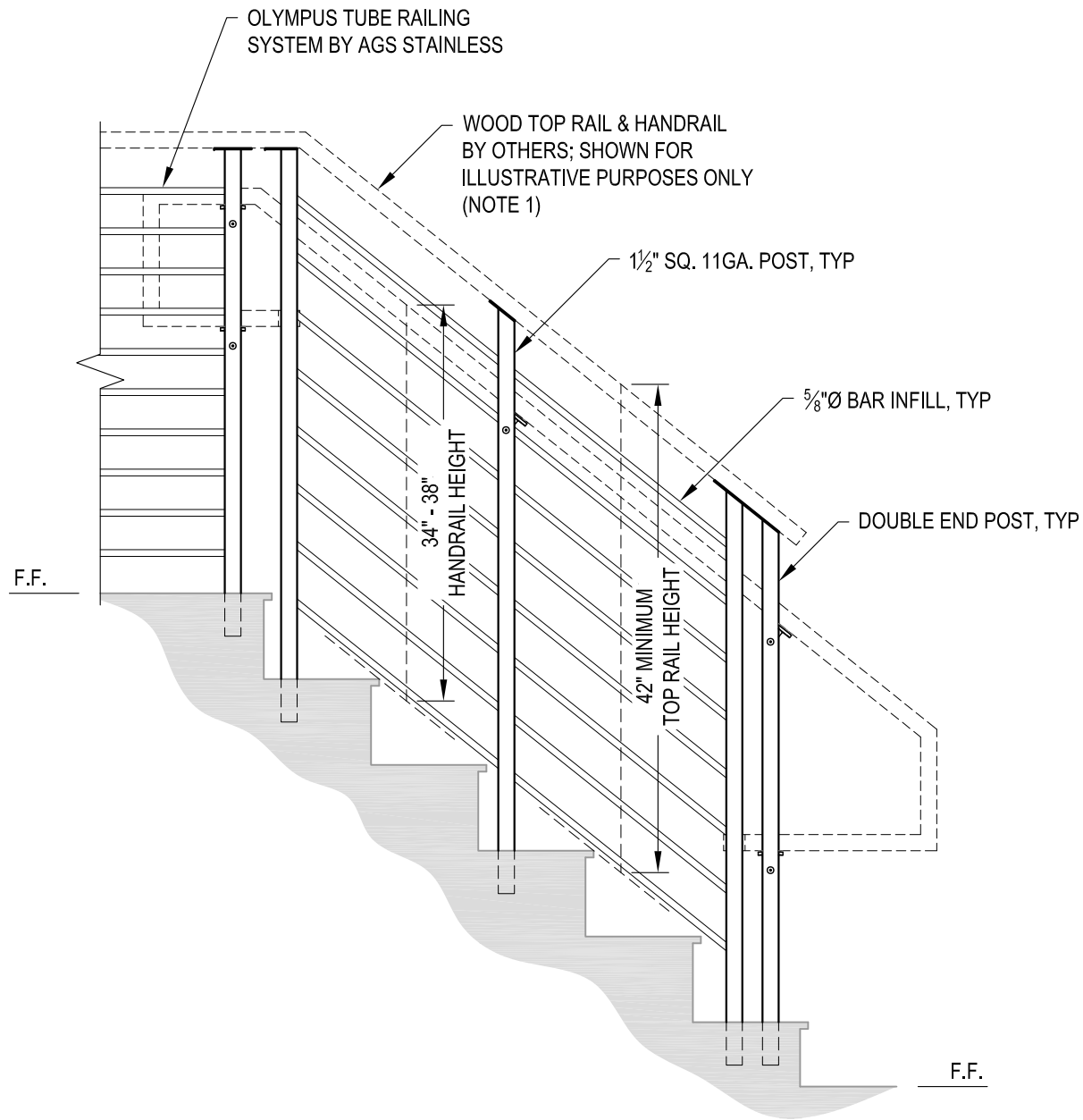
**A** TYPICAL RAILING CONDITION ELEVATION

DATE	2024	SHEET	2 OF 4
DESIGNER	AGS		
SCALE	NONE		
OWNER	OLYMPUS CM42WC		

OLYMPUS SPECIFICATION DRAWING  
 \*\* COMMERCIAL \*\*  
 42" CORE MOUNT - WOOD TOP

7873 NE DAY ROAD  
 BAINBRIDGE ISLAND, WA 98110  
 PHONE - (888) 842-9492  
 FAX - (206) 842-8779  
 WWW.AGSSTAINLESS.COM





**A** STAIR  
ELEVATION

**NOTES:**

1. TOP RAIL & HANDRAIL SHOULD BE SELECTED SO THAT ALL GOVERNING CODE REQUIREMENTS ARE SATISFIED. THESE INCLUDE SHAPE, STRENGTH AND RAILING HEIGHT.
2. STAIR CONSTRUCTION VARIES GREATLY. AS-BUILT CONDITIONS MAY ALTER RAILING DESIGN, INCLUDING POST LOCATION & MOUNTING, INFILL SPACING & TOP RAIL LAYOUT.

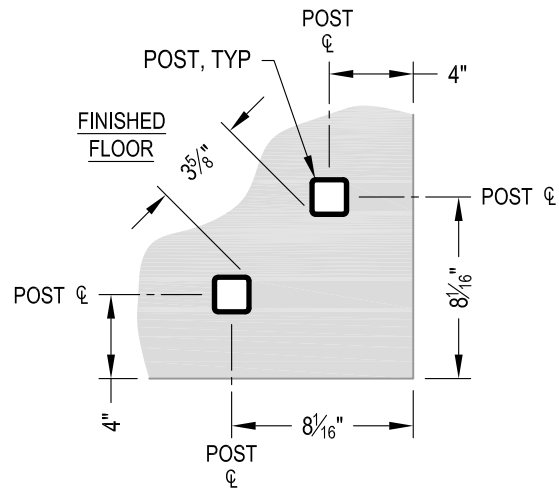
AGS Stainless Clearview® Railing Systems are designed to meet the requirements of the latest edition of the IRC/IBC.

DATE	OLYMPUS CM42WC
	2024
SCALE	NONE
DESIGNER	AGS
SHEET	3 OF 4

OLYMPUS SPECIFICATION DRAWING  
\*\* COMMERCIAL \*\*  
42" CORE MOUNT - WOOD TOP

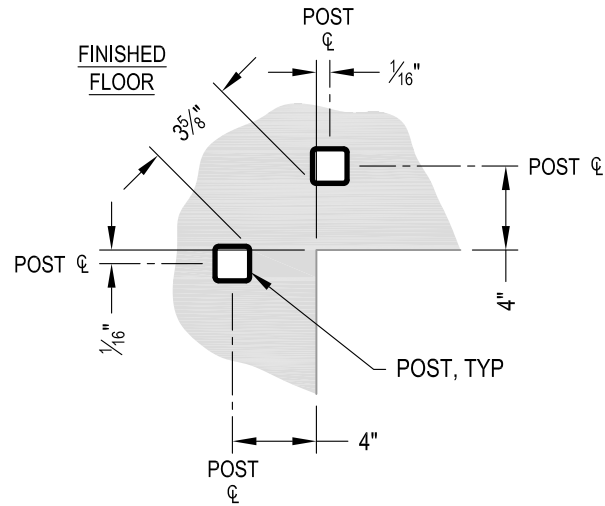
7873 ME DAY ROAD  
BAINBRIDGE ISLAND, WA 98110  
PHONE - (888) 842-9492  
FAX - (206) 842-8179  
WWW.AGSSTAINLESS.COM





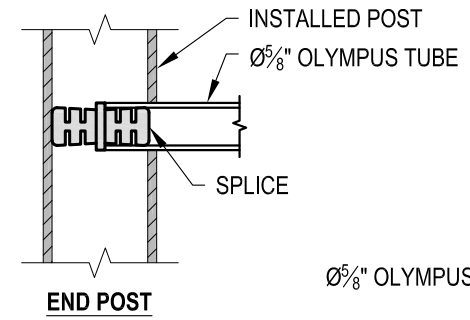
NOTE: 90° SHOWN, OTHER ANGLES SIMILAR

**A** TYPICAL 90° CORE MOUNT OUTSIDE CORNER  
DETAIL

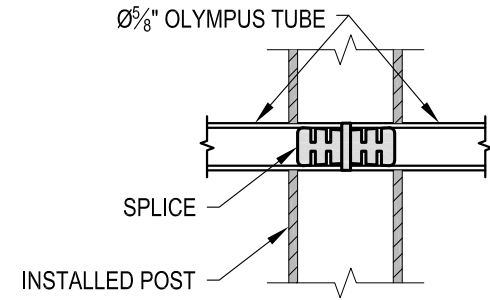


NOTE: 90° SHOWN, OTHER ANGLES SIMILAR

**B** TYPICAL 90° CORE MOUNT INSIDE CORNER  
DETAIL



END POST



INTERMEDIATE POST

**C** FITTING INSTALLATION - OLYMPUS SPLICE  
DETAIL

OWNER	OLYMPUS CM42WC
SCALE	NONE
DATE	2024
DESIGNER	AGS
SHEET	4 OF 4

OLYMPUS SPECIFICATION DRAWING  
\*\* COMMERCIAL \*\*

42" CORE MOUNT - WOOD TOP

7873 MEYER ROAD  
BAMBRIDGE ISLAND, WA 98110  
PHONE - (888) 842-9492  
FAX - (206) 842-8779  
WWW.AGSSTAINLESS.COM

