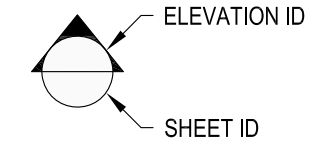
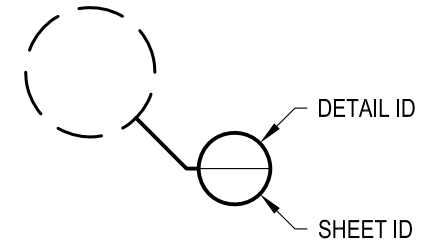


1 EXAMPLE POST LAYOUT  
PLAN VIEW

NOTES:

1. TOP RAIL NOT SHOWN FOR CLARITY.
2. ALL PARTS AND COMPONENTS MADE WITH 316 STAINLESS STEEL UNLESS NOTED OTHERWISE.

LEGEND



□ SIDE MOUNT POST

□-□ SIDE MOUNT DOUBLE POST

⊕ CENTERLINE

F.F. FINISHED FLOOR

TYP TYPICAL CONDITION APPLIES  
ELSEWHERE AT SIMILAR CONDITIONS

OWNER	RAINIER SM42FC
SCALE	NONE
DATE	2024
DESIGNER	AGS
SHEET	1 OF 4

RAINIER SPECIFICATION DRAWING  
\*\* COMMERCIAL \*\*

42" SIDE MOUNT - FLAT TOP

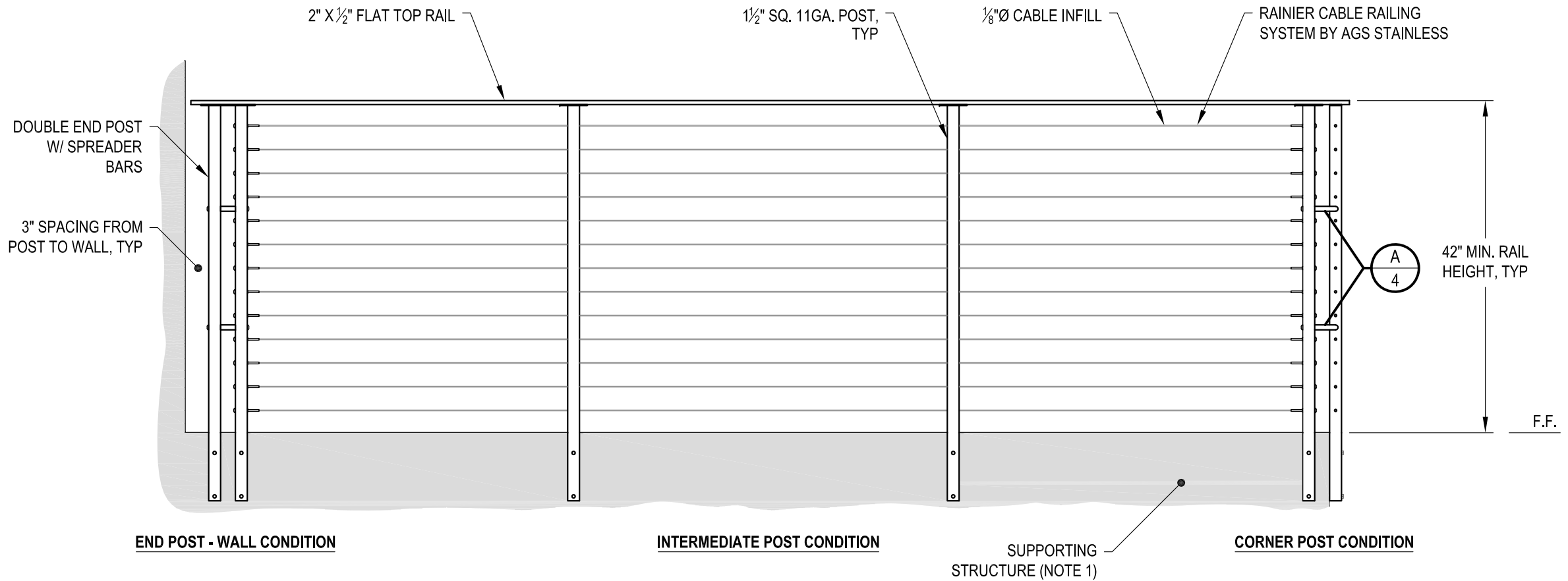
7873 NE DAY ROAD  
BAINBRIDGE ISLAND, WA 98110

PHONE - (888) 842-9492  
FAX - (206) 842-8779  
WWW.AGSSTAINLESS.COM



**NOTES:**

- DECK STRUCTURE CAN VARY GREATLY. IT IS THE RESPONSIBILITY OF THE CUSTOMER TO VERIFY THAT THE SUPPORTING STRUCTURE IS ADEQUATE TO MEET THE LOAD REQUIREMENTS OF THE GOVERNING BUILDING CODE(S). *AGS Stainless Inc.* RECOMMENDS CONSULTING A DESIGN OR CONSTRUCTION PROFESSIONAL TO ADDRESS THESE ISSUES.



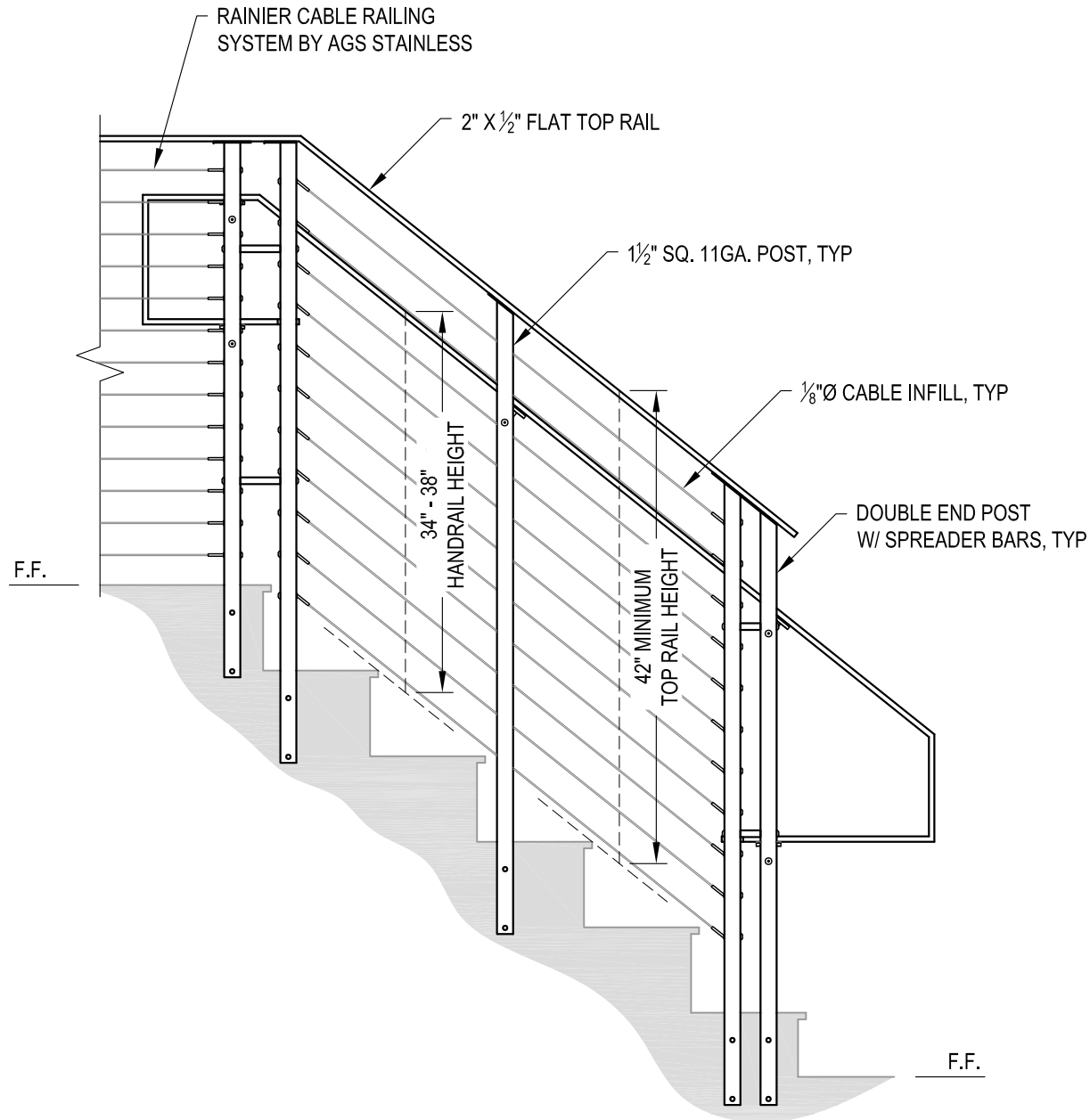
**A** TYPICAL RAILING CONDITION ELEVATION

DATE	2024	DESIGNER	AGS	SHEET	2 OF 4
SCALE	NONE				
RRAINIER SSM42FC					

RRAINIER SPECIFICATION DRAWING  
 \*\* COMMERCIAL \*\*  
 42" SIDE MOUNT - FLAT TOP

7873 NE DAY ROAD  
 BAINBRIDGE ISLAND, WA 98110  
 PHONE - (888) 842-9492  
 FAX - (206) 842-8779  
 WWW.AGSSTAINLESS.COM





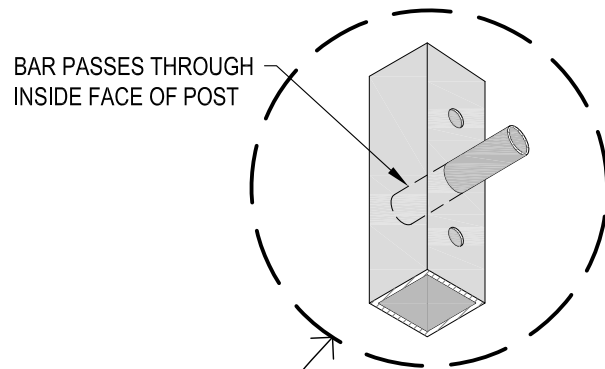
**A** STAIR  
ELEVATION

**NOTES:**

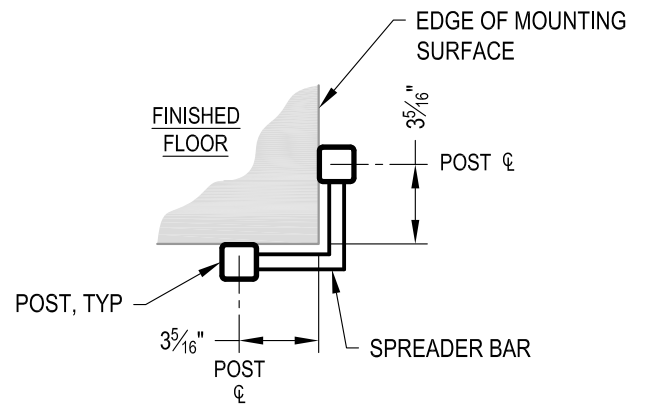
1. STAIR CONSTRUCTION VARIES GREATLY. AS-BUILT CONDITIONS MAY ALTER RAILING DESIGN, INCLUDING POST LOCATION & MOUNTING, INFILL SPACING & TOP RAIL LAYOUT.

AGS Stainless Clearview® Railing Systems are designed to meet the requirements of the latest edition of the IRC/IBC.

<b>AGS stainless</b> <small>CLEARVIEW® Railing Systems</small>	<small>7873 MEADY ROAD          BAINBRIDGE ISLAND, WA 98110          PHONE - (888) 842-9492          FAX - (206) 842-8179          WWW.AGSSTAINLESS.COM</small>	<b>RAINIER SPECIFICATION DRAWING</b> <b>** COMMERCIAL **</b> <b>42" SIDE MOUNT - FLAT TOP</b>	<small>DATE</small> 2024 <small>DESIGNER</small> AGS <small>SCALE</small> NONE <small>SHEET</small> 3 OF 4
	<small>7873 MEADY ROAD          BAINBRIDGE ISLAND, WA 98110          PHONE - (888) 842-9492          FAX - (206) 842-8179          WWW.AGSSTAINLESS.COM</small>	<b>RAINIER SPECIFICATION DRAWING</b> <b>** COMMERCIAL **</b> <b>42" SIDE MOUNT - FLAT TOP</b>	<small>DATE</small> 2024 <small>DESIGNER</small> AGS <small>SCALE</small> NONE <small>SHEET</small> 3 OF 4

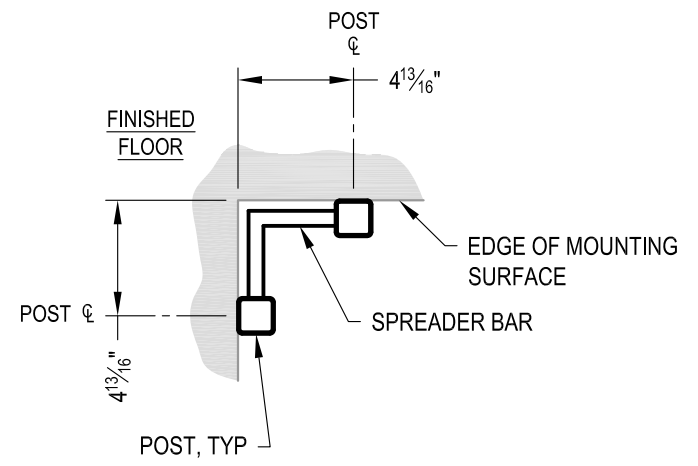


**A** CORNER POST ASSEMBLY  
DETAIL



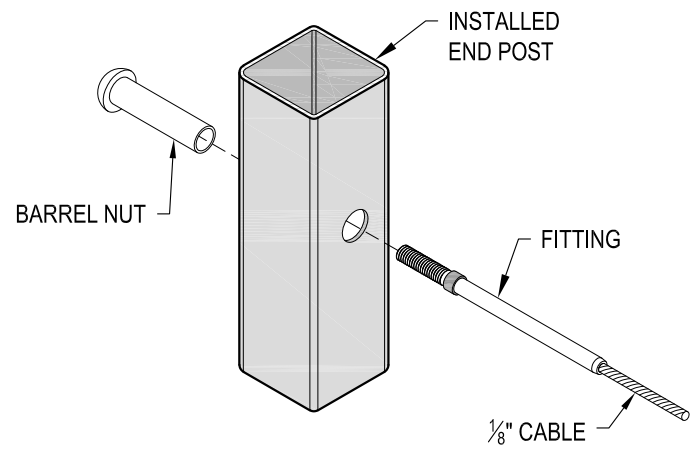
**NOTE: 90° SHOWN, OTHER ANGLES SIMILAR**

**B** TYPICAL SIDE MOUNT OUTSIDE CORNER  
DETAIL

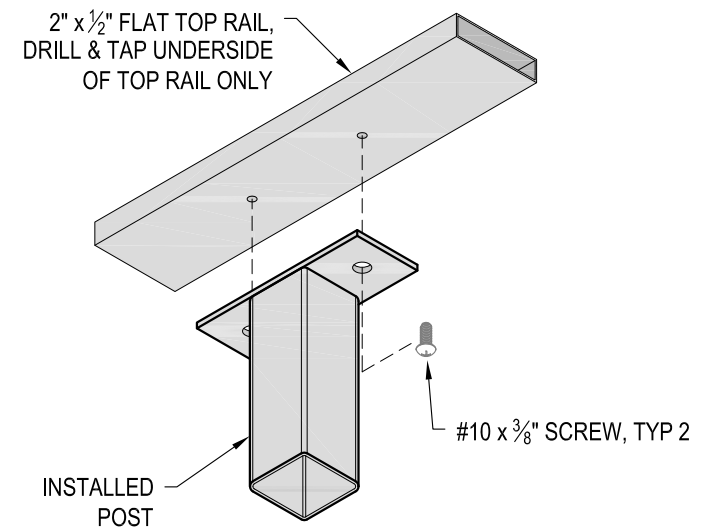


**NOTE: 90° SHOWN, OTHER ANGLES SIMILAR**

**C** TYPICAL SIDE MOUNT INSIDE CORNER  
DETAIL



**D** FITTING INSTALLATION - BARREL NUT  
DETAIL



**E** TOP RAIL INSTALLATION - FLAT  
DETAIL

AGS Stainless Clearview® Railing Systems are designed to meet the requirements of the latest edition of the IRC/IBC.

<b>AGS stainless</b> CLEARVIEW® Railing Systems	7873 MEYER ROAD BAINBRIDGE ISLAND, WA 98110 PHONE - (888) 842-9492 FAX - (206) 842-8779 WWW.AGSSTAINLESS.COM	<b>RAINIER SM42FC</b> DATE 2024 SCALE NONE DESIGNER AGS SHEET 4 OF 4
	<b>RAINIER SPECIFICATION DRAWING</b> <b>** COMMERCIAL **</b> <b>42" SIDE MOUNT - FLAT TOP</b>	