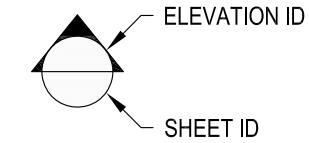
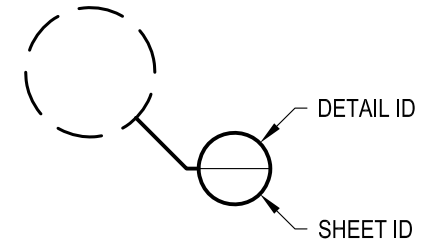


**1** EXAMPLE POST LAYOUT  
PLAN VIEW

**NOTES:**

1. TOP RAIL NOT SHOWN FOR CLARITY.
2. ALL PARTS AND COMPONENTS MADE WITH 316 STAINLESS STEEL UNLESS NOTED OTHERWISE.

**LEGEND**



□ CORE MOUNT POST

⊕ CENTERLINE

F.F. FINISHED FLOOR

TYP TYPICAL CONDITION APPLIES ELSEWHERE AT SIMILAR CONDITIONS

OWNER	RAINIER CM36W
SCALE	NONE
DATE	2024
DESIGNER	AGS
SHEET	1 OF 4

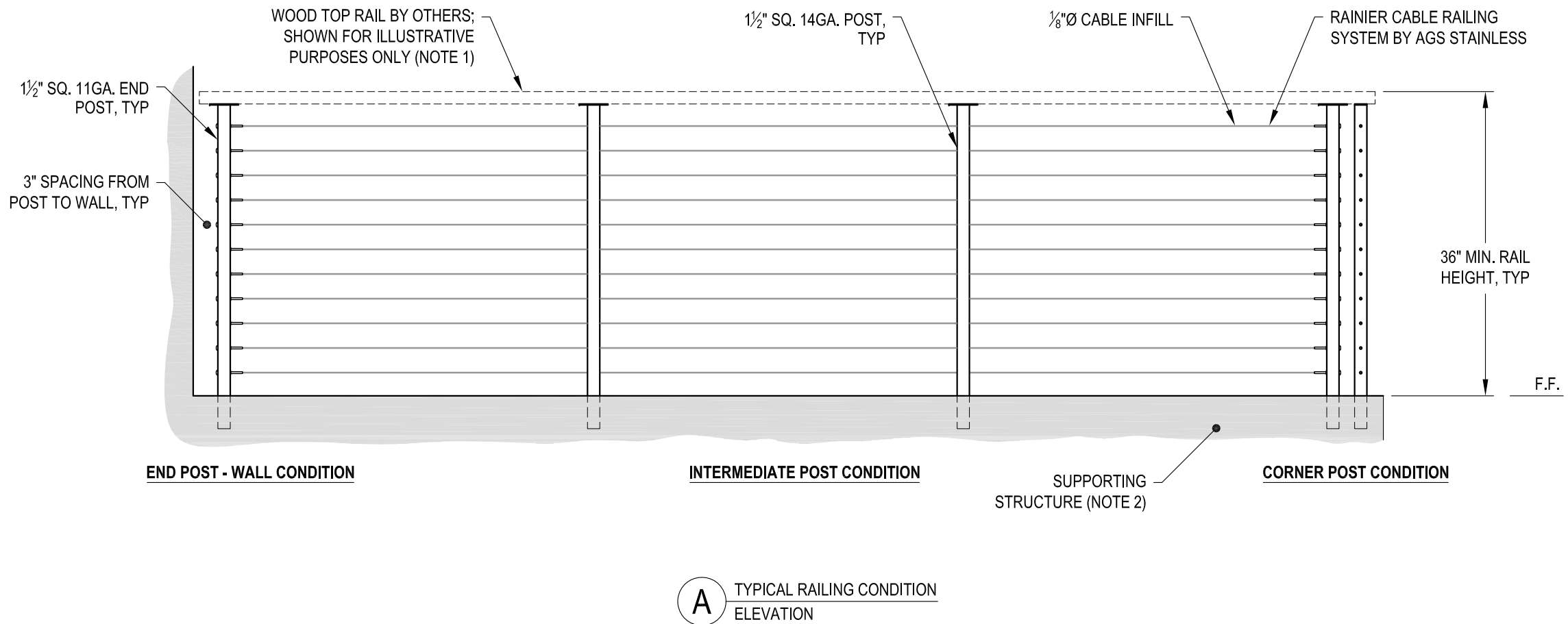
RAINIER SPECIFICATION DRAWING  
\*\* RESIDENTIAL \*\*  
36" CORE MOUNT - WOOD TOP

7873 NE DAY ROAD  
BAINBRIDGE ISLAND, WA 98110  
PHONE - (888) 842-9492  
FAX - (206) 842-4317  
WWW.AGSSTAINLESS.COM



**NOTES:**

1. TOP RAIL SHOULD BE SELECTED SO THAT ALL GOVERNING CODE REQUIREMENTS ARE SATISFIED. THESE INCLUDE SHAPE, STRENGTH AND RAILING HEIGHT.
2. DECK STRUCTURE CAN VARY GREATLY. IT IS THE RESPONSIBILITY OF THE CUSTOMER TO VERIFY THAT THE SUPPORTING STRUCTURE IS ADEQUATE TO MEET THE LOAD REQUIREMENTS OF THE GOVERNING BUILDING CODE(S). *AGS Stainless Inc.* RECOMMENDS CONSULTING A DESIGN OR CONSTRUCTION PROFESSIONAL TO ADDRESS THESE ISSUES.

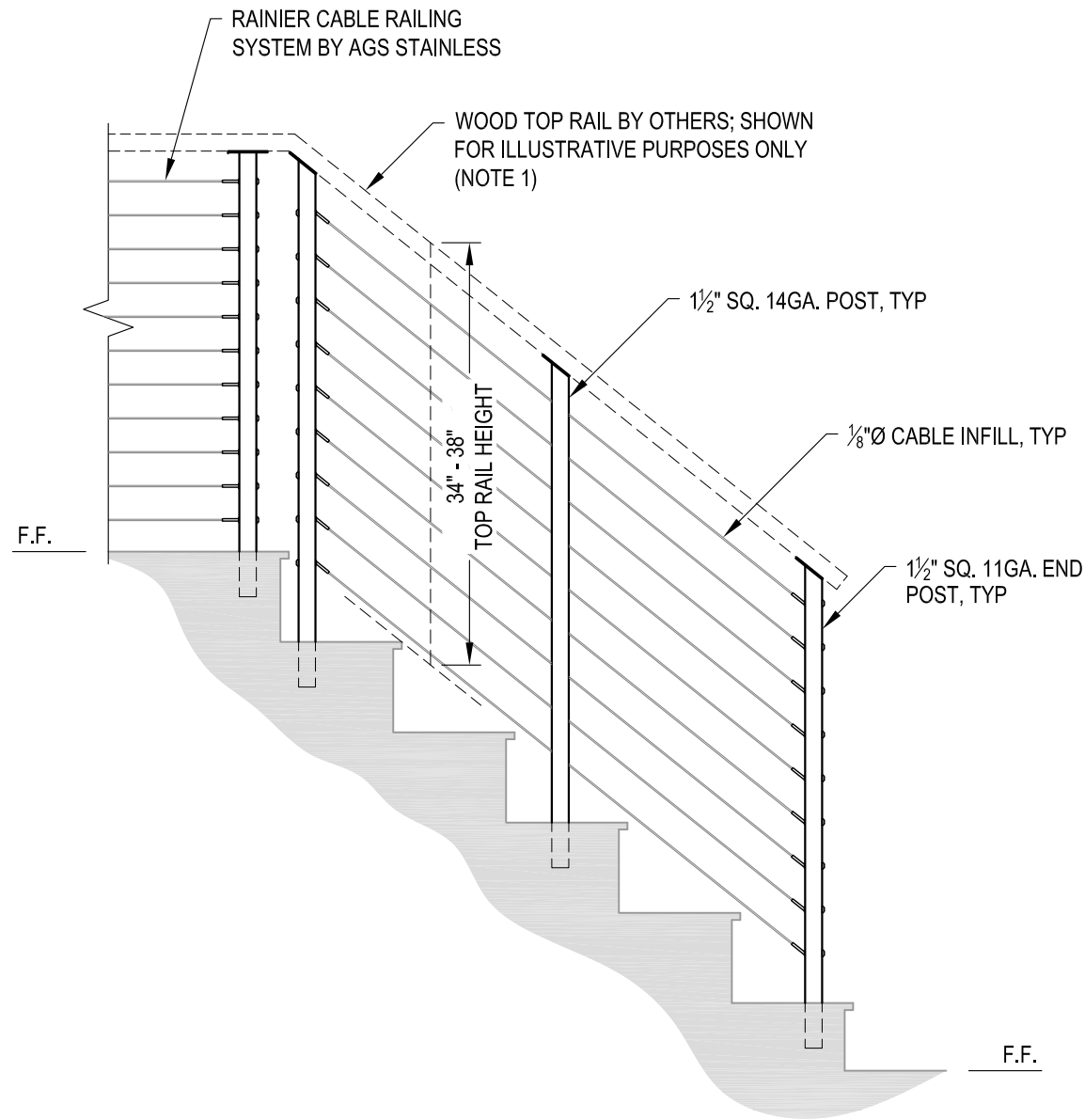


DATE	2024	DESIGNER	AGS	SHEET	2 OF 4
SCALE	NONE				

**RAINIER SPECIFICATION DRAWING**  
**\*\* RESIDENTIAL \*\***  
**36" CORE MOUNT - WOOD TOP**

7873 NE DAY ROAD  
 BAINBRIDGE ISLAND, WA 98110  
 PHONE - (888) 842-9492  
 FAX - (206) 842-4317  
 WWW.AGSSTAINLESS.COM



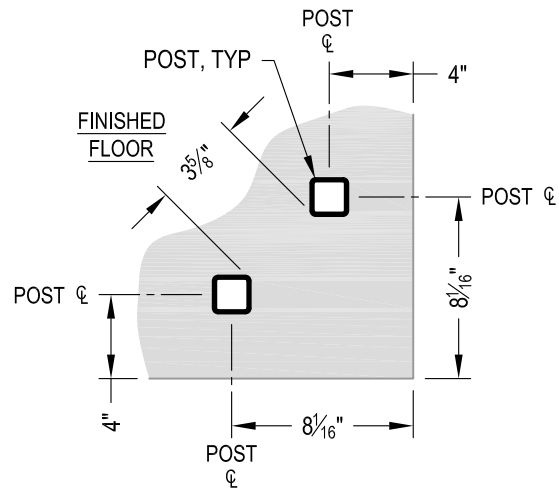


**A** STAIR  
ELEVATION

**NOTES:**

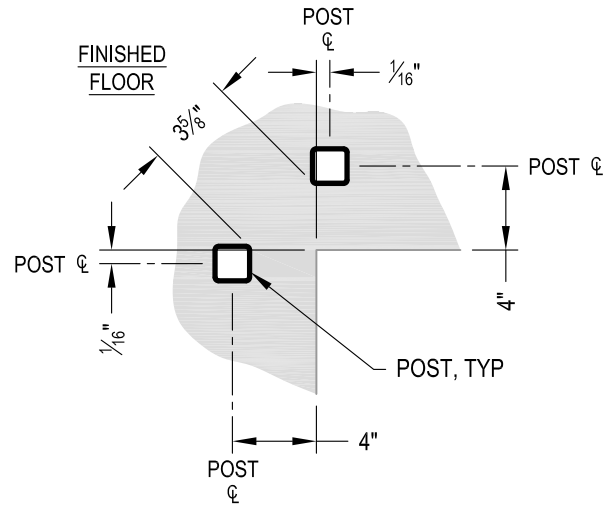
1. TOP RAIL SHOULD BE SELECTED SO THAT ALL GOVERNING CODE REQUIREMENTS ARE SATISFIED. THESE INCLUDE SHAPE, STRENGTH AND RAILING HEIGHT.
2. STAIR CONSTRUCTION VARIES GREATLY. AS-BUILT CONDITIONS MAY ALTER RAILING DESIGN, INCLUDING POST LOCATION & MOUNTING, INFILL SPACING & TOP RAIL LAYOUT.

DWS# <b>RAINIER CM36W</b>	DATE <b>2024</b>	SHEET <b>3 OF 4</b>
	SCALE <b>NONE</b>	
<b>RAINIER SPECIFICATION DRAWING</b> <b>** RESIDENTIAL **</b>		
<b>36" CORE MOUNT - WOOD TOP</b>		
7873 MEADY ROAD BAINBRIDGE ISLAND, WA 98110 PHONE - (888) 842-9492 FAX - (206) 842-4317 WWW.AGSSTAINLESS.COM		



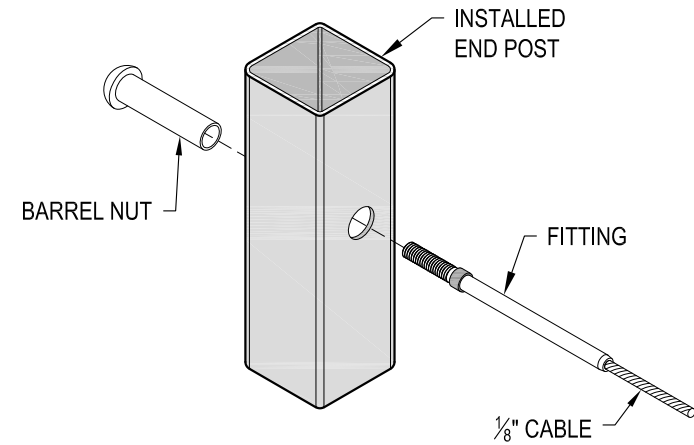
NOTE: 90° SHOWN, OTHER ANGLES SIMILAR

**A** TYPICAL 90° CORE MOUNT OUTSIDE CORNER  
DETAIL



NOTE: 90° SHOWN, OTHER ANGLES SIMILAR

**B** TYPICAL 90° CORE MOUNT INSIDE CORNER  
DETAIL



**C** FITTING INSTALLATION - BARREL NUT  
DETAIL