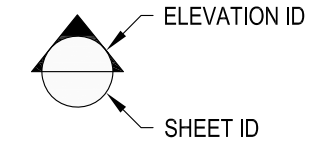
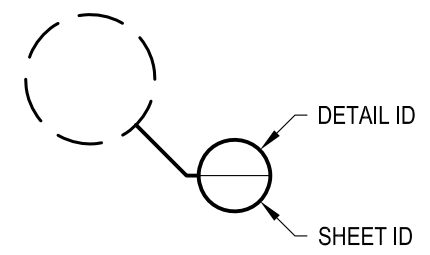


**1** EXAMPLE POST LAYOUT  
PLAN VIEW

**NOTES:**

1. TOP RAIL NOT SHOWN FOR CLARITY.
2. ALL PARTS AND COMPONENTS MADE WITH 316 STAINLESS STEEL UNLESS NOTED OTHERWISE.

**LEGEND**



□ CORE MOUNT POST

☉ CENTERLINE

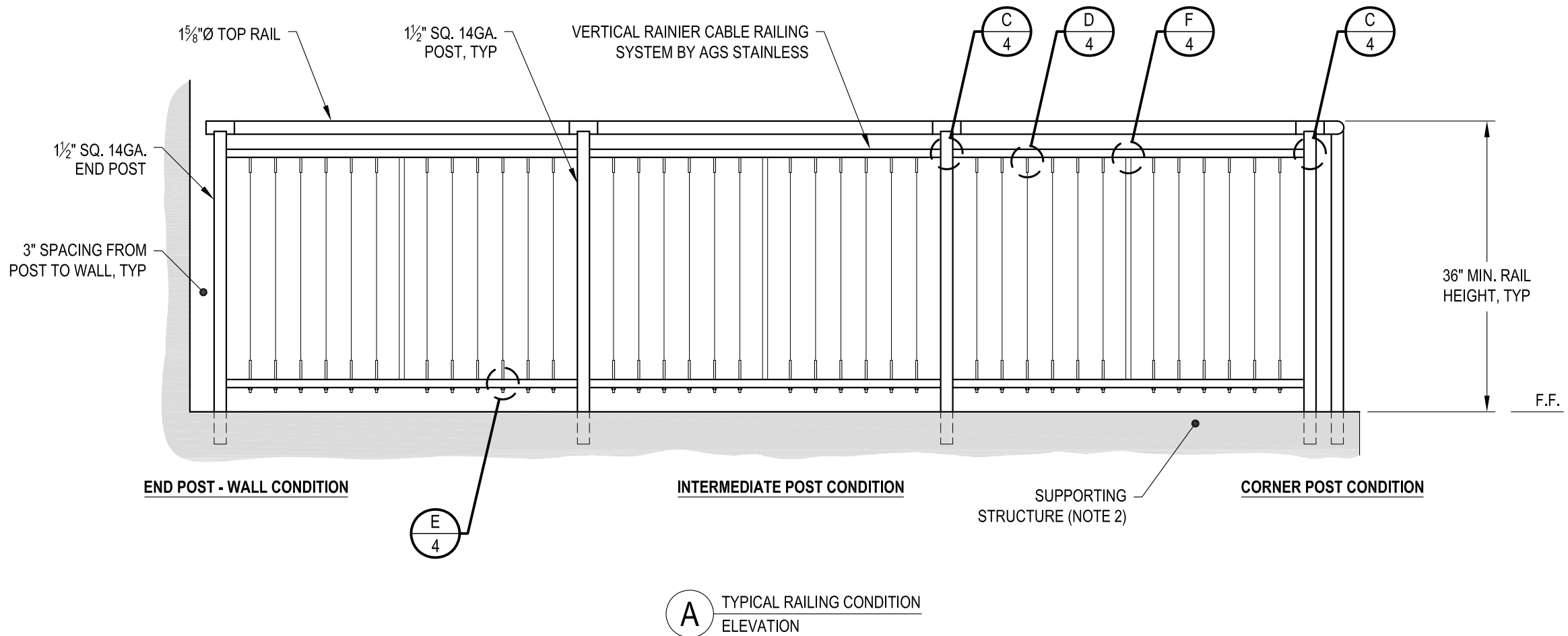
F.F. FINISHED FLOOR

TYP TYPICAL CONDITION APPLIES ELSEWHERE AT SIMILAR CONDITIONS

DWS+ <b>RAINIER CM36R</b>	SCALE NONE	DATE 2024	SHEET 1 OF 4
	DESIGNER <b>AGS</b>		
<b>VERTICAL RAINIER SPECIFICATION DRAWING</b> <b>** RESIDENTIAL **</b>			
<b>36" CORE MOUNT - ROUND TOP</b>			
7873 NE DAY ROAD BAINBRIDGE ISLAND, WA 98110 PHONE - (888) 842-9492 FAX - (206) 842-8179 WWW.AGSSTAINLESS.COM			
 CLEARVIEW® Railing Systems			

**NOTES:**

- DECK STRUCTURE CAN VARY GREATLY. IT IS THE RESPONSIBILITY OF THE CUSTOMER TO VERIFY THAT THE SUPPORTING STRUCTURE IS ADEQUATE TO MEET THE LOAD REQUIREMENTS OF THE GOVERNING BUILDING CODE(S). *AGS Stainless Inc.* RECOMMENDS CONSULTING A DESIGN OR CONSTRUCTION PROFESSIONAL TO ADDRESS THESE ISSUES.



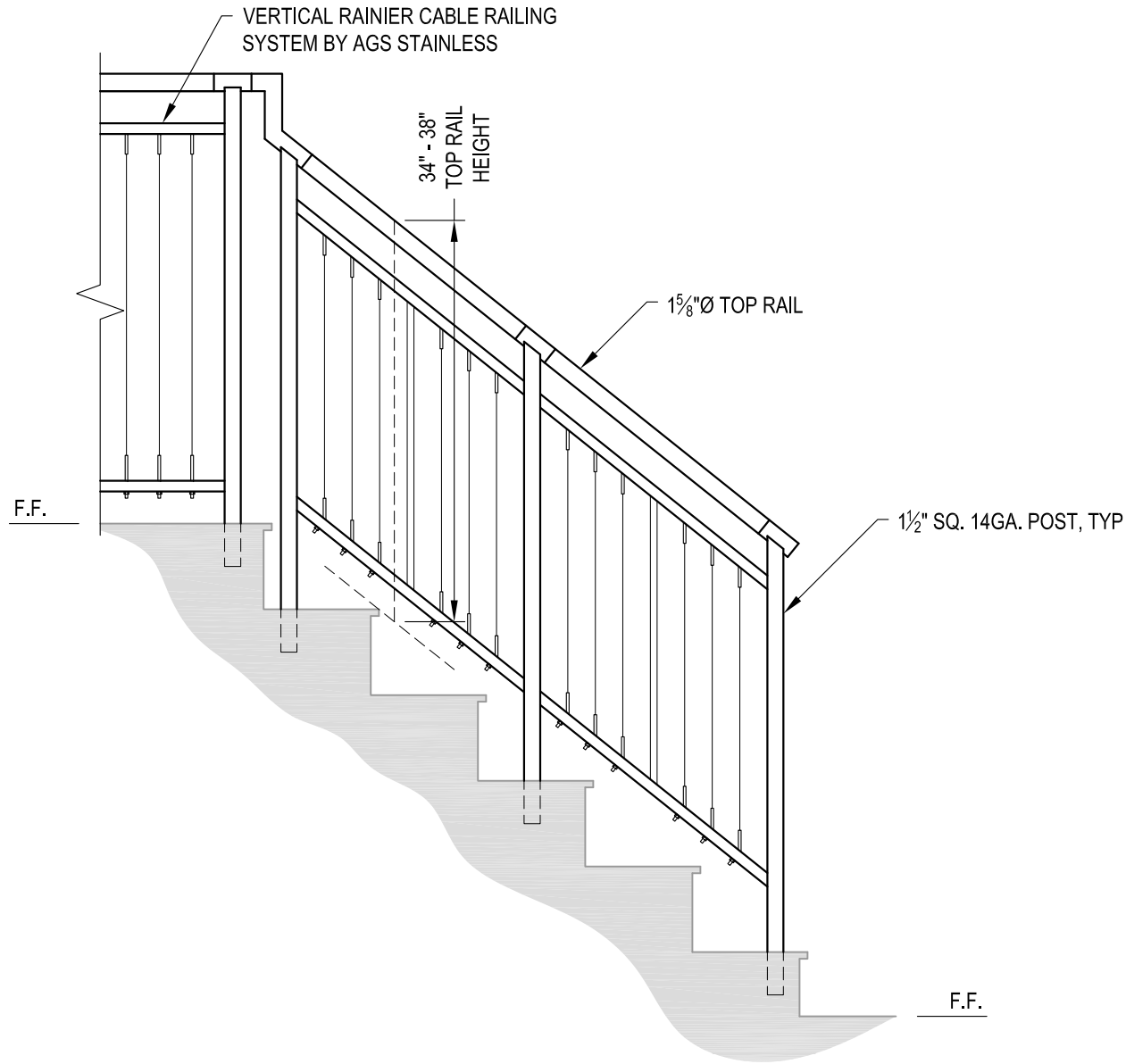
AGS Stainless Clearview® Railing Systems are designed to meet the requirements of the latest edition of the IRC/IBC.

VERTICAL RAINIER SPECIFICATION DRAWING  
 \*\* RESIDENTIAL \*\*

DESIGNER: AGS  
 SCALE: NONE  
 DATE: 2024  
 SHEET: 2 OF 4

7873 NE DAY ROAD  
 BAINBRIDGE ISLAND, WA 98110  
 PHONE - (888) 842-9492  
 FAX - (206) 842-8179  
 WWW.AGSTAINLESS.COM





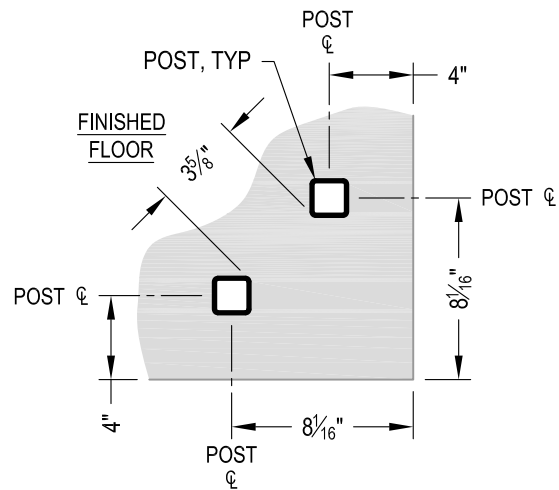
**A** STAIR  
ELEVATION

**NOTES:**

1. STAIR CONSTRUCTION VARIES GREATLY. AS-BUILT CONDITIONS MAY ALTER RAILING DESIGN, INCLUDING POST LOCATION & MOUNTING, INFILL SPACING & TOP RAIL LAYOUT.

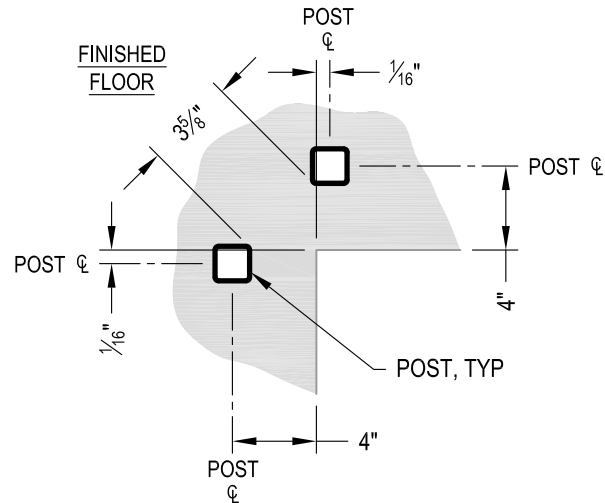
AGS Stainless Clearview® Railing Systems are designed to meet the requirements of the latest edition of the IRC/IBC.

DWS# <b>VERTICAL RAINIER SPECIFICATION DRAWING</b> ** RESIDENTIAL ** 36" CORE MOUNT - ROUND TOP	RAINIER CM36R	2024	3 OF 4
	SCALE NONE	DATE NONE	SHEET AGS
7873 MEADY ROAD BANBRIDGE ISLAND, WA 98110 PHONE - (888) 842-9492 FAX - (206) 842-8179 WWW.AGSSTAINLESS.COM			



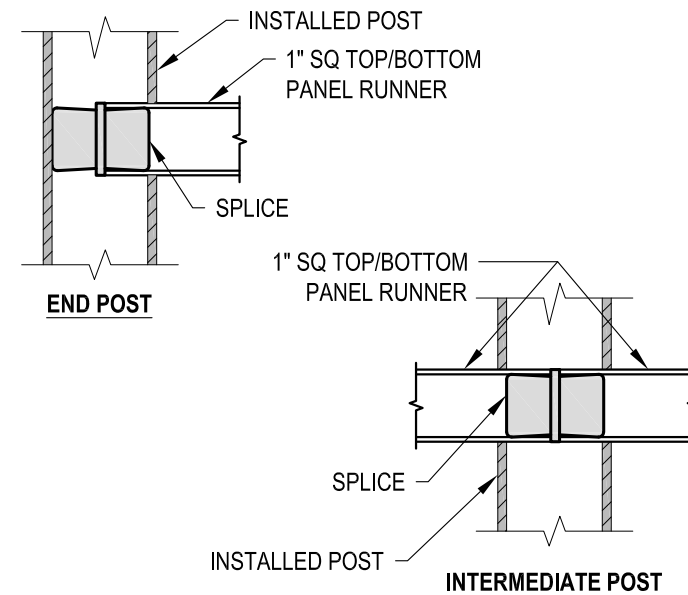
NOTE: 90° SHOWN, OTHER ANGLES SIMILAR

**A** TYPICAL 90° CORE MOUNT OUTSIDE CORNER DETAIL

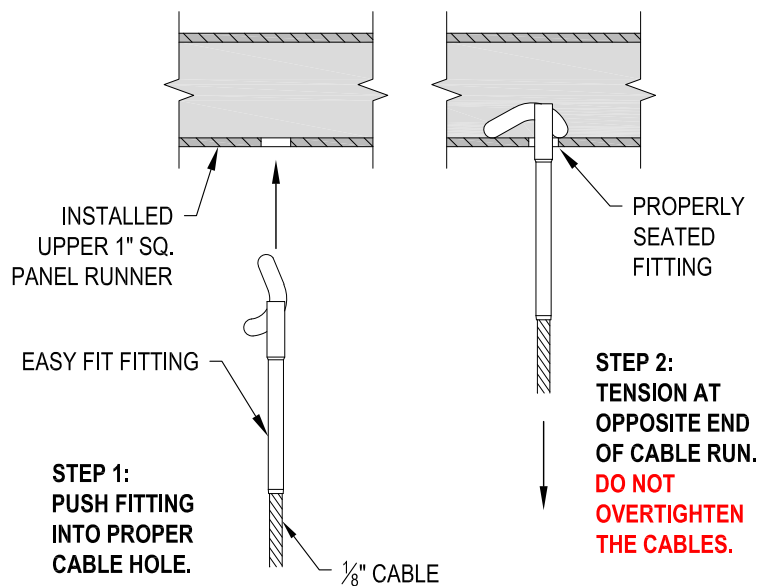


NOTE: 90° SHOWN, OTHER ANGLES SIMILAR

**B** TYPICAL 90° CORE MOUNT INSIDE CORNER DETAIL

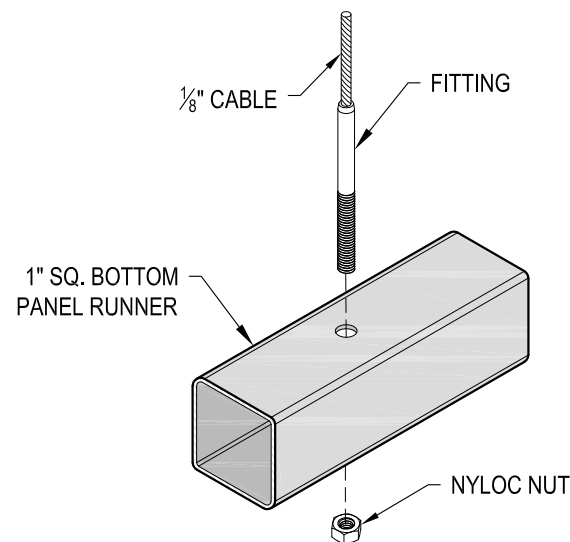


**C** FITTING INSTALLATION - VERTICAL PANEL RAIL SPLICE DETAIL

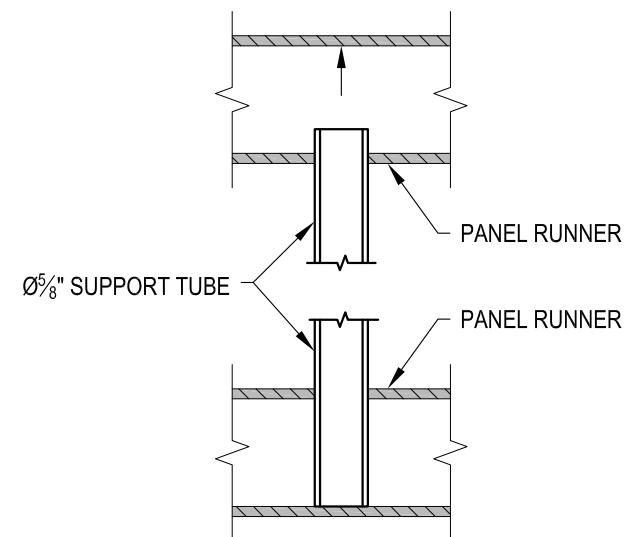


STEP 2: TENSION AT OPPOSITE END OF CABLE RUN. **DO NOT OVERTIGHTEN THE CABLES.**

**D** FITTING INSTALLATION - EASY FIT DETAIL



**E** FITTING INSTALLATION - STANDARD DETAIL



**F** PANEL SUPPORT TUBE INSTALLATION DETAIL

7873 NE DAY ROAD BAINBRIDGE ISLAND, WA 98110 PHONE - (888) 842-9492 FAX - (206) 842-8179 WWW.AGSSTAINLESS.COM	RAINIER CM36R DATE 2024 SCALE NONE DESIGNER AGS	SHEET 4 OF 4
	VERTICAL RAINIER SPECIFICATION DRAWING ** RESIDENTIAL ** 36" CORE MOUNT - ROUND TOP	