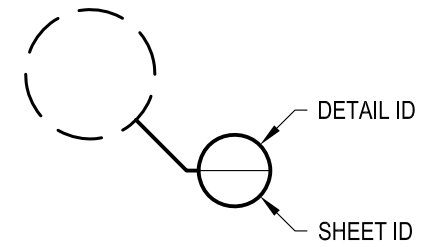


1 EXAMPLE POST LAYOUT  
PLAN VIEW

NOTES:

1. TOP RAIL NOT SHOWN FOR CLARITY.
2. ALL PARTS AND COMPONENTS MADE WITH 316 STAINLESS STEEL UNLESS NOTED OTHERWISE.

LEGEND



□ CORE MOUNT POST

□ □ CORE MOUNT DOUBLE POST

☉ CENTERLINE

F.F. FINISHED FLOOR

TYP TYPICAL CONDITION APPLIES  
ELSEWHERE AT SIMILAR CONDITIONS

OWNER	RAINIER CM42W
SCALE	NONE
DATE	2024
DESIGNER	AGS
SHEET	1 OF 4

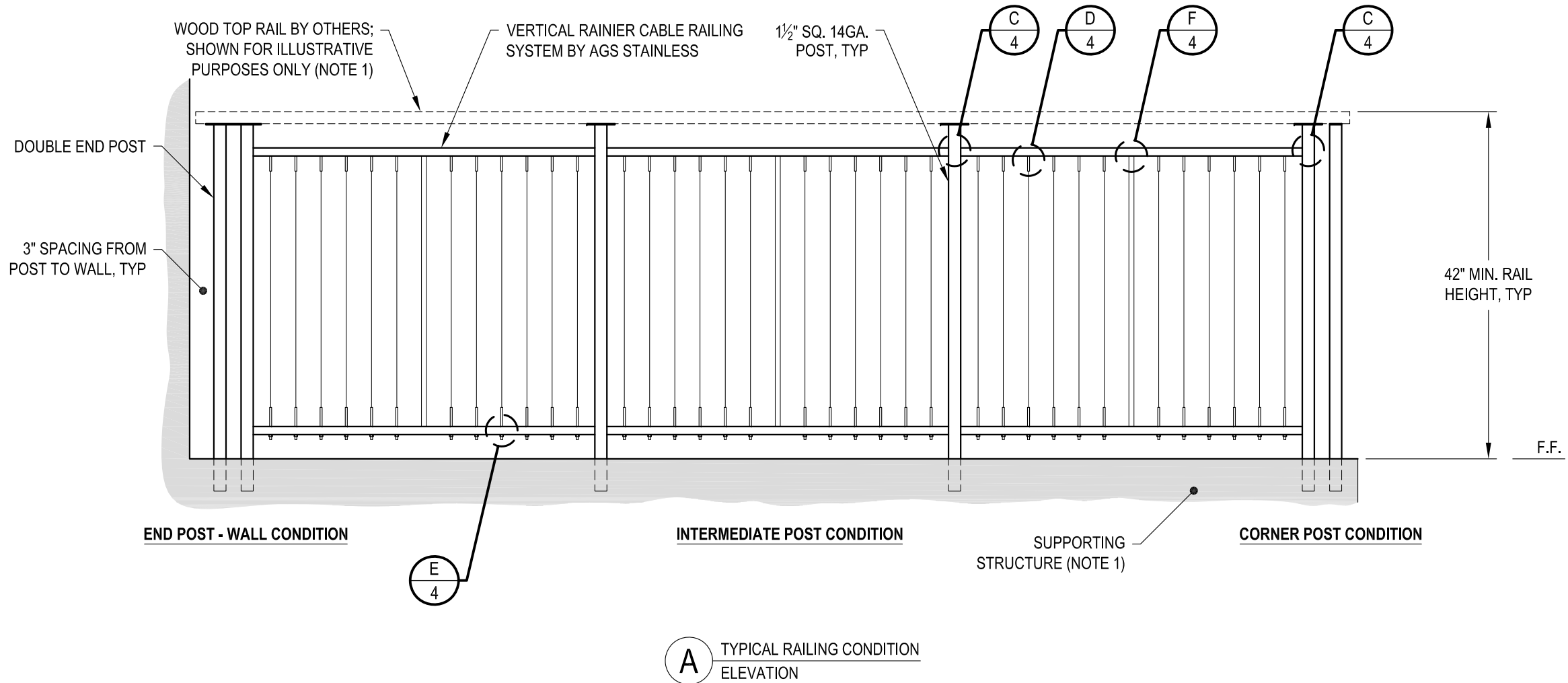
VERTICAL RAINIER SPECIFICATION DRAWING  
\*\* RESIDENTIAL \*\*  
42" CORE MOUNT - WOOD TOP

7873 NE DAY ROAD  
BAINBRIDGE ISLAND, WA 98110  
PHONE - (888) 842-9492  
FAX - (206) 842-8179  
WWW.AGSSTAINLESS.COM



**NOTES:**

1. TOP RAIL SHOULD BE SELECTED SO THAT ALL GOVERNING CODE REQUIREMENTS ARE SATISFIED. THESE INCLUDE SHAPE, STRENGTH AND RAILING HEIGHT.
2. DECK STRUCTURE CAN VARY GREATLY. IT IS THE RESPONSIBILITY OF THE CUSTOMER TO VERIFY THAT THE SUPPORTING STRUCTURE IS ADEQUATE TO MEET THE LOAD REQUIREMENTS OF THE GOVERNING BUILDING CODE(S). AGS Stainless Inc. RECOMMENDS CONSULTING A DESIGN OR CONSTRUCTION PROFESSIONAL TO ADDRESS THESE ISSUES.



AGS Stainless Clearview® Railing Systems are designed to meet the requirements of the latest edition of the IRC/IBC.

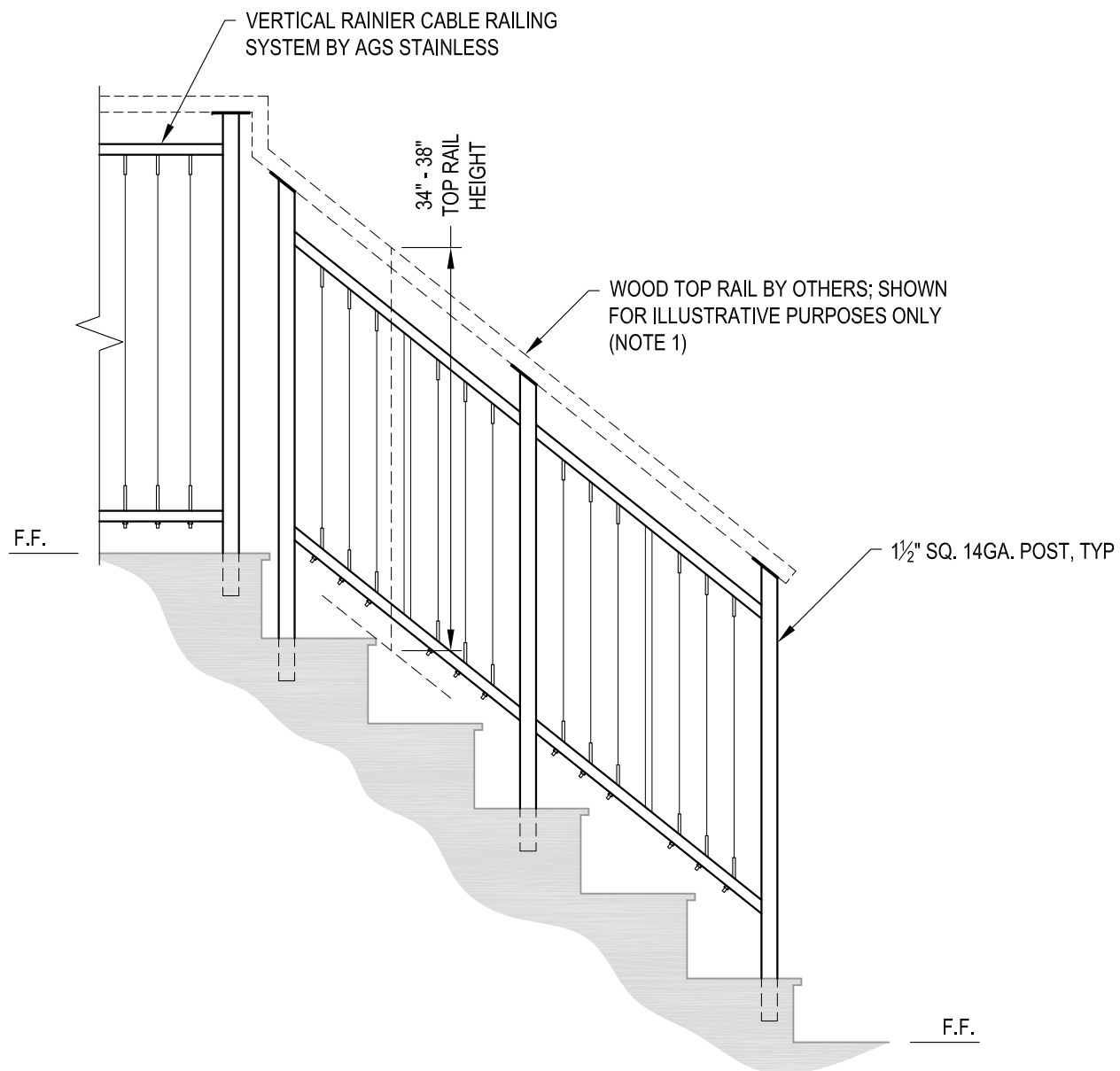
DATE	2024
SCALE	NONE
DESIGNER	AGS
SHEET	2 OF 4

VERTICAL RAINIER RAILING SPECIFICATION DRAWING  
 \*\* RESIDENTIAL \*\*

42" CORE MOUNT - WOOD TOP

7873 NE DAY ROAD  
 BAINBRIDGE ISLAND, WA 98110  
 PHONE - (888) 842-9492  
 FAX - (206) 842-8179  
 WWW.AGSTAINLESS.COM



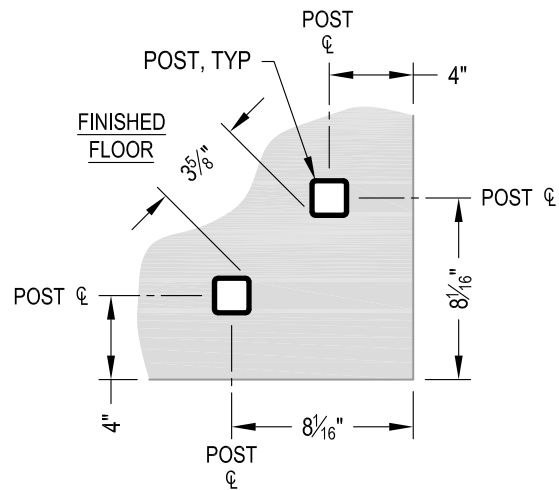


**A** STAIR ELEVATION

**NOTES:**

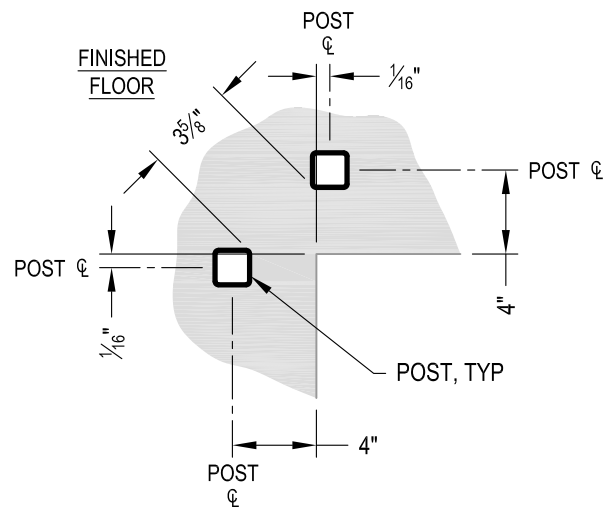
1. TOP RAIL SHOULD BE SELECTED SO THAT ALL GOVERNING CODE REQUIREMENTS ARE SATISFIED. THESE INCLUDE SHAPE, STRENGTH AND RAILING HEIGHT.
2. STAIR CONSTRUCTION VARIES GREATLY. AS-BUILT CONDITIONS MAY ALTER RAILING DESIGN, INCLUDING POST LOCATION & MOUNTING, INFILL SPACING & TOP RAIL LAYOUT.

<b>AGS stainless</b> <small>CLEARVIEW® Railing Systems</small>	<small>7873 NE DAY ROAD          BAINBRIDGE ISLAND, WA 98110          PHONE - (888) 842-9492          FAX - (206) 842-8179          WWW.AGSSTAINLESS.COM</small>	<b>VERTICAL RAINIER SPECIFICATION DRAWING</b> <b>** RESIDENTIAL **</b> <b>42" CORE MOUNT - WOOD TOP</b>	<small>DATE</small> 2024 <small>DESIGNER</small> AGS <small>SHEET</small> 3 OF 4
	<small>8065+</small> RAINIER CM42W <small>SCALE</small> NONE		



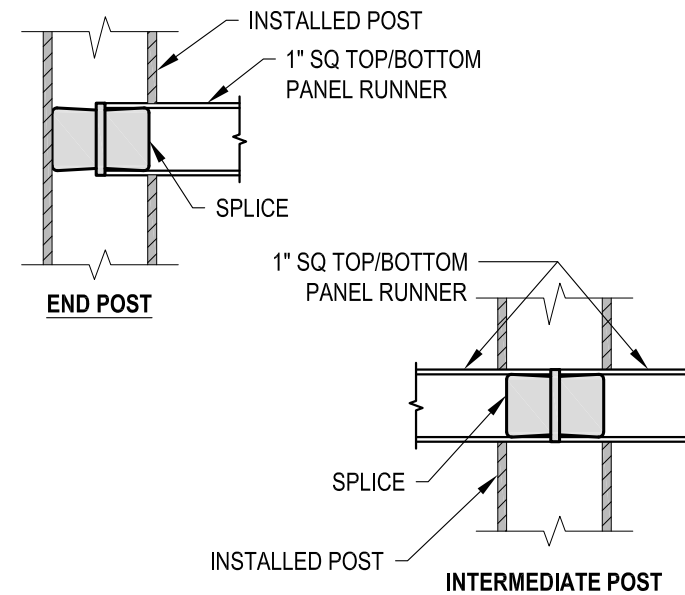
NOTE: 90° SHOWN, OTHER ANGLES SIMILAR

**A** TYPICAL 90° CORE MOUNT OUTSIDE CORNER DETAIL

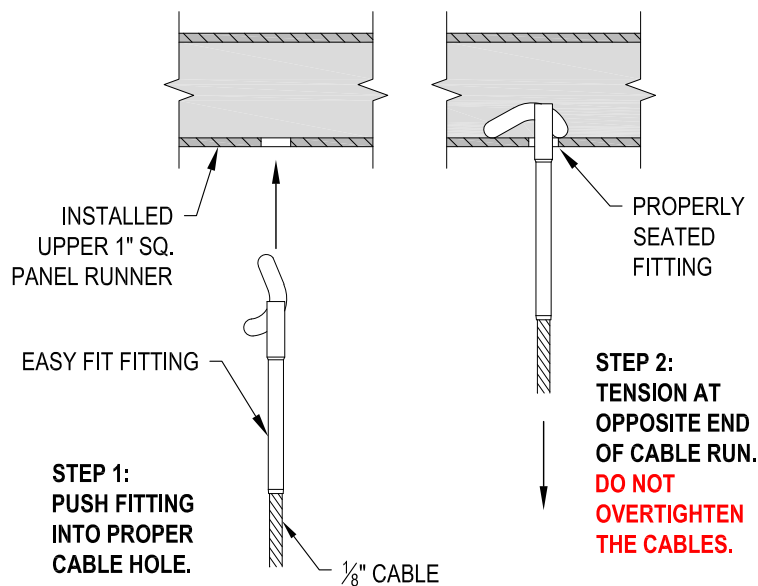


NOTE: 90° SHOWN, OTHER ANGLES SIMILAR

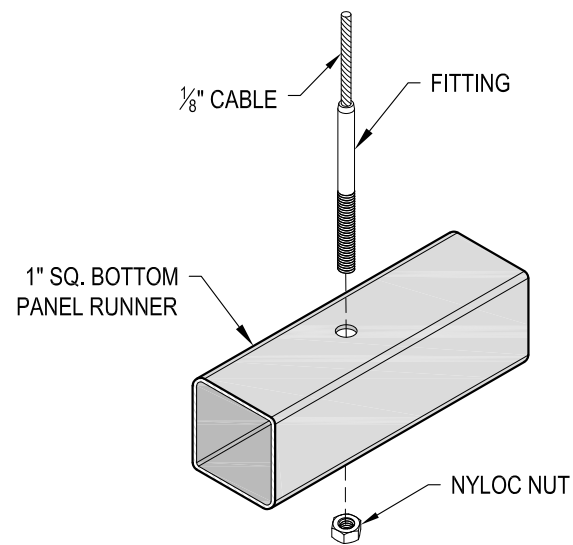
**B** TYPICAL 90° CORE MOUNT INSIDE CORNER DETAIL



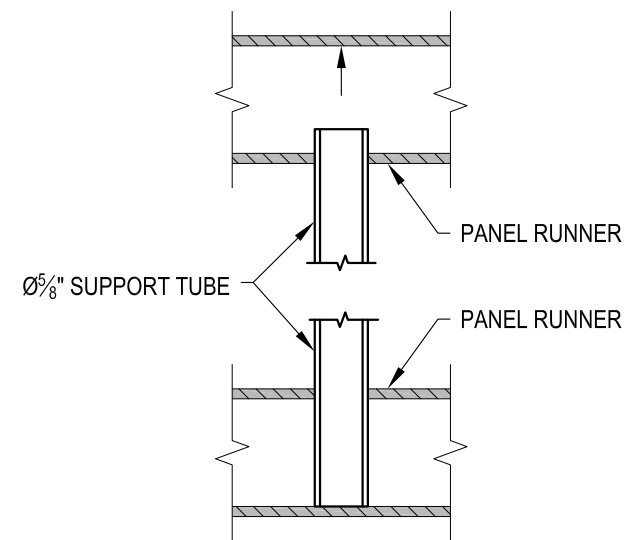
**C** FITTING INSTALLATION - VERTICAL PANEL RAIL SPLICE DETAIL



**D** FITTING INSTALLATION - EASY FIT DETAIL



**E** FITTING INSTALLATION - STANDARD DETAIL



**F** PANEL SUPPORT TUBE INSTALLATION DETAIL

AGS Stainless Clearview® Railing Systems are designed to meet the requirements of the latest edition of the IRC/IBC.

7873 NE DAY ROAD BAINBRIDGE ISLAND, WA 98110 PHONE - (888) 842-9492 FAX - (206) 842-8179 WWW.AGSSTAINLESS.COM	RAINIER CM42W DATE 2024 SCALE NONE DESIGNER AGS	SHEET 4 OF 4
	VERTICAL RAINIER SPECIFICATION DRAWING ** RESIDENTIAL ** 42" CORE MOUNT - WOOD TOP	