

**For More Information, Press Only:**

Stuart Hanson, Hanson Communications  
ph. 253.677.5337 | [shanson@Hanson-Comm.com](mailto:shanson@Hanson-Comm.com)



## **Romanock Residence by Partners for Architecture Required Low Maintenance, Contoured Railings**

---

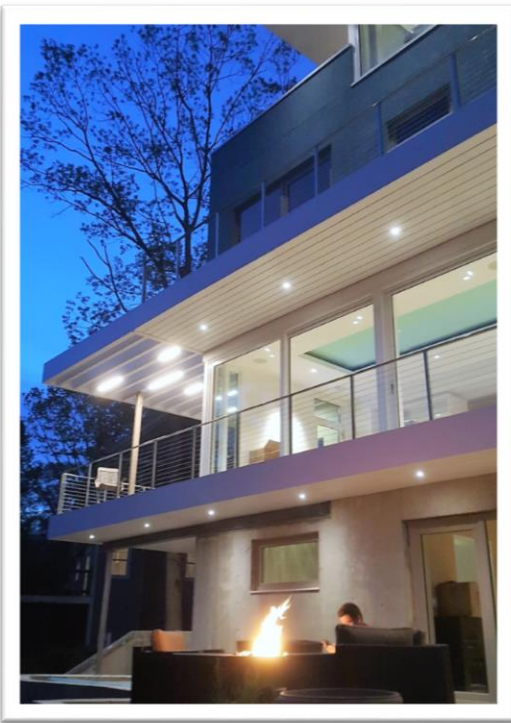
### **The Scenario**

The Stamford, Connecticut-based, Partners For Architecture was inaugurated in 2000 with the dedication to establish an architectural firm providing comprehensive and environmentally-sensitive

architectural services. Over the years, it proved challenging for the firm to find clients willing and able to commission a residential project utilizing the technologies and features they established as modern, sustainable and high-performance, including: low maintenance, lower energy use, resourcefulness, comfort and sustainability. Then in 2013, plans for a new home for one of firm's principals, Rainer Schrom, AIA, presented an opportunity to combine a multitude of sustainable features, technologies and assemblies into one residential project, and control their implementation – especially two essential aspects of utmost importance to the owner – comfort and low maintenance.

## The Solution

In the past, Partners For Architecture had always utilized local railing fabricators when a project called for a metal railing system. Mr. Schrom wanted the refined, elegant look of stainless steel railings to complement the structural character of the design. After some research, the option of having the custom rails designed and built completely offsite (prefabricated) was selected – the Clearview® stainless steel cable railing system by AGS Stainless. AGS' Rainier cable rail system with an elliptical top rail was chosen to because of its low maintenance and comfortability aspects. Schrom explains: "In



contrast to glass railings, which would have been the only other alternative for a transparent, modern railing, a cable railing system requires a lot less maintenance and cleaning to stay attractive, it visually disappears since it does not show reflections, it is light-weight and eventually fully recyclable – really the only choice for this project."

"I really liked both the overall minimalistic look and delicacy of the AGS railing system, I liked the fact that they offer A316 marine grade stainless steel, but I must admit – I was a bit apprehensive about the prospect to have a railing system fabricated at literally the opposite end of the United States from us, then shipped across the country, intact, with hopefully all parts and pieces included, and with no way of having the installation modified or fixed by

a fabricator on site," added Schrom. "It turned out the shipment was extremely well packed, every

piece was there, and with the quality and precision of a railing system being custom prefabricated for the project, it went together effortless and seamlessly. And it looks absolutely fabulous upon installation.”

The Clearview® line of stainless steel railing systems from AGS Stainless can be specified with wide array of options including: numerous top rail and post mounting choices, powder-coating and even glass infill – for a fully-customized look at an affordable cost. “For Romanock, the Elliptical top rail was selected as its shape is naturally contoured to fit the human hand, so in addition to being beautiful and low maintenance it lends itself nicely to increased functionality and comfort,” explains Kevin Harris, Director of Sales & Marketing at AGS Stainless. “And now that baby boomers are growing older and wanting to continue living within their upscale, existing homes – incorporating design elements that also improve accessibility is ideal for both indoor and outdoor railing applications.”

### **Prefabrication: AGS Makes It Easy**

Customizing a prefabricated railing system with AGS Stainless is straightforward and simple. They first generate exact drawings and details for your project from initial approximate dimensions and photos submitted by the customer; then, work directly with the architect/homeowner/contractor to make certain every detail is just right. Furthermore, each AGS Stainless railing system is designed and built entirely at their world-class facility located in the Pacific Northwest – so every AGS Stainless customer essentially has their very own outsourced railing factory, complete with world-class welders and state-of-the-art fabrication machines to create a beautiful high-quality railing system specific for their project.

“Our unique process shortens installation times, improves quality and greatly reduces the labor expense normally associated with locally-fabricated railing systems,” adds Harris. “For example, local fabricators rely on on-site adjustments – known in the industry as ‘field modifications’ – to really dial-in their work on the project. Dealing with weather and other challenging



on-site conditions can have a negative impact on the finished quality of the railing system. The state-of-the-art fabrication tools we use in our facilities are accurate to 4/1000's of an inch. And, because the entire railing system is built in our quality-controlled environment, we don't have to allow for the weather or other job site uncertainties. It would be incredibly difficult for a local metal fabricator to match the quality and precision of prefabrication."

## The Result

Since installation, Schrom and the entire team at Partners for Architecture been so impressed they've specified AGS stainless steel railing systems on recent new construction projects and recommended them to remodeling clients as well. Potential client apprehension turned satisfied client adoration is always a good result.

## Project Details:

**Location:** Fairfield, Connecticut

**Specifications:** New construction; 4,900 sq. ft., 4BR/4.5BA

**Design/Build Team:** Partners For Architecture ([www.pfarch.net](http://www.pfarch.net))

**Project Website:** [www.romanock.com](http://www.romanock.com)

**Photography:** Regina Tamburro Photography ([www.reginatamburro.com](http://www.reginatamburro.com))

**Railing Products:** AGS Stainless ([www.AGSStainless.com](http://www.AGSStainless.com) – 888-842-9492)

## About AGS Stainless:

AGS Stainless Inc., (AGS) manufactures the Clearview® line of prefabricated ornamental railing systems. For more than two decades AGS Stainless has built railings for some of the world's most distinctive homes. With an innovative component-based design and all stainless-steel construction; Clearview® railings eliminate the need for any on-site welding or cutting of posts and top rail. AGS' design department generates CAD (computer-aided design) documents for each railing project insuring precise, project-specific fabrication. Each Clearview® railing system is made to order to the highest quality standards, and delivered to you ready to be installed-with a few simple hand tools. AGS offers custom, prefabricated railing systems from high-quality marine grade A316 stainless steel with stainless steel cable, stainless steel bar, wire mesh or tempered glass panel infill options. For more information, visit [www.AGSStainless.com](http://www.AGSStainless.com) or call 888-842-9492.

###